

# KUMSTAR

ARKA TEJARAT AEEEN CO.

Industrial Company

نماینده‌گی انحصاری دابل استار و کوم استار در ایران با 5 سال گارانتی شرکت

ارکا تجارت آیین

تلفن: ۰۲۱-۷۳۶۴۲۰۰۰

واتس‌آپ: ۰۹۱۲۳۳۶۹۴۸۲

[www.aktej.com](http://www.aktej.com)

Edition 2021/1

## TBR CATALOGUE



# BRIEF INTRODUCTION OF DOUBLESTAR GROUP

- A century rubber enterprise founded in 1921
- The Asia's 500 Most Influential Brands
- China's 500 Most Valuable Brands

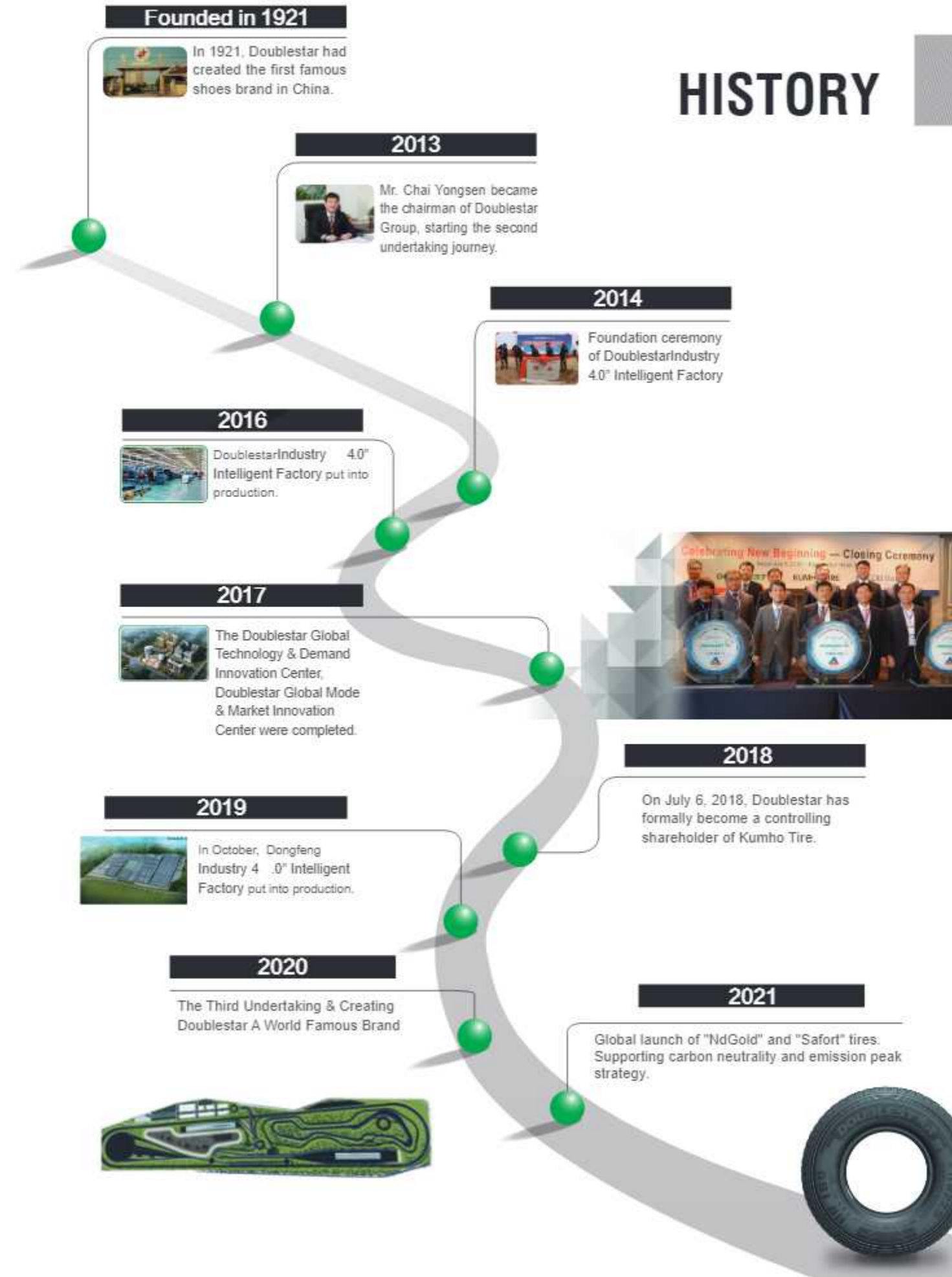
Doublestar is the only state-owned listed tire enterprise with nearly a century history in Shandong Province and the chairman unit of China Rubber Industry Association Tire Branch. Nowadays, Doublestar group becomes an international group integrating three divisions of tire manufacturing, intelligent equipment (including industrial robot) and waste rubber green recycling.

As the leader of intelligent tire manufacturing in China, Doublestar is the first company with both TBR and PCR whole process "Industry 4.0" factory in tire industry. Doublestar has built 3 production bases in China (Qingdao, Shiyao, Dongying) including 6 factories. The annual production capacity is about 8 million TBR tires and 20 million PCR tires.



Doublestar "Industry 4.0" Intelligent Factory

# HISTORY



# Product Quality Certificate



IATF 16949



ISO9001



ISO14001



OHSAS18001



E4-R30



E4-R54(POR)



E4-R117



GCC



DOT



SNI



INMETRO



SASO



# Doublestar R&D Strength

Semi-anechoic Room



Force & Moment Machine



Tire Scanning Analyzer



Tire 3D Printer



LONG-HAUL



# DMS100



### CHARACTERISTICS



**Excellent handling and driving Performance**  
New vertical pattern designing provides excellent handling and driving comfort.



**High mileage and driving stability**  
Extra-wide tread blocks and deep grooves ensure ultra high mileage and driving stability.



**Much safer**  
The bottom of the groove is reinforced with small ribs to reduce stone retention and protect the tire casing.

### POSITION

Steer and trailer

Pattern	Size	PR	Tread Depth		Standard Rim	Pressure(kPa)		Max. Load(kg)		Load Index		Speed Grade	Inflated Diameter			
			mm	1/32in		Single	Dual	Single	Dual	Single	Dual		mm		inch	
													Overall Diameter	Section Width	Overall Diameter	Section Width
DMS100	385/65R22.5	20	17.5	22	11.75	900	\	4500	\	160(158)	\	K(L)	1072	389	42	15
	385/65R22.5	24	17.5	22	11.75	900	\	5000	\	164	\	K	1072	389	42	15



# FT0306



### CHARACTERISTICS



**Strengthened carcass and low heat generation, much safer**  
High strength steel cords increases the tire strength by 15%; low heat generation compound decreases the tire heating at high speed; ensuring safe driving.



**Super anti-wear, high mileage and more durable**  
Super anti-wear tread compound improves the mileage by more than 10% than other brands.



**Low fuel consumption, high economical efficiency**  
Low rolling resistance provides lower fuel consumption and lower operating cost, more economical.

### POSITION

Steer

Pattern	Size	PR	Tread Depth		Standard Rim	Pressure(kPa)		Max. Load(kg)		Load Index		Speed Grade	Inflated Diameter			
			mm	1/32in		Single	Dual	Single	Dual	Single	Dual		mm		inch	
													Overall Diameter	Section Width	Overall Diameter	Section Width
FT0306	315/80R22.5	18	17.5	22	9.00	830	830	3750	3450	154	151	M	1076	312	42	12



# DLD100



### CHARACTERISTICS

Wide tread width and block design increase the tire's surface contact area and helps provide stability while helping to improve handling and mileage.



**Excellent driving and traction performance**  
Big block pattern ensures excellent driving and stronger traction performance.



**Better wet grip performance**  
The transverse wavy sipe design provides excellent wet grip performance.



**Low heat generation, longer service life**  
The open shoulder design ensures better heat dissipation.

### POSITION

Drive

Pattern	Size	PR	Tread Depth		Standard Rim	Pressure(kPa)		Max. Load(kg)		Load Index		Speed Grade	Inflated Diameter			
			mm	1/32in		Single	Dual	Single	Dual	Single	Dual		mm		inch	
													Overall Diameter	Section Width	Overall Diameter	Section Width
DLD100	315/80R22.5	20PR	21.5	27	9.00	850	850	4000	3350	158	150	K	1076	312	42	12



# DMA100



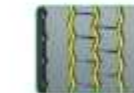
### CHARACTERISTICS



**High mileage and driving stability**  
Extra-wide tread blocks ensure ultra high mileage and driving stability.



**Prevent uneven wear**  
The small grooves between the blocks helps prevent uneven wear, which enables longer mileage.



**Excellent traction performance**  
The main tread grooves maximize traction performance under all applications.

### POSITION

All position

Pattern	Size	PR	Tread Depth		Standard Rim	Pressure(kPa)		Max. Load(kg)		Load Index		Speed Grade	Inflated Diameter			
			mm	1/32in		Single	Dual	Single	Dual	Single	Dual		mm		inch	
													Overall Diameter	Section Width	Overall Diameter	Section Width
DMA100	12.00R24	20	16.0	20	8.50	900	900	4500	4125	160	157	L	1226	315	48	12
	315/80R22.5	20	16.0	20	9.00	850	850	4000	3350	158	150	L	1076	312	42	12

REGIONAL

LIGHT TRUCK



# DSRS01



## CHARACTERISTICS



Anti-sideslip, much safer  
Four longitudinal grooves design for excellent steering, anti-skidding and anti-slip performance.



Anti-wear, higher mileage  
Wear resistant compound provides good anti-wear performance and high mileage.



Better wet grip performance  
The transverse wavy sipes design has excellent wet grip performance.

POSITION  
All position



Pattern	Size	PR	Tread Depth		Standard Rim	Pressure(kPa)		Max. Load(kg)		Load Index		Speed Grade	Inflated Diameter			
			mm	1/32in		Single	Dual	Single	Dual	Single	Dual		mm		inch	
													Overall Diameter	Section Width	Overall Diameter	Section Width
DSRS01	205/75R17.5	14	12.0	15	6.00	760	760	1550	1450	123	121	M	733	204	29	8
	205/75R17.5	16	12.0	15	6.00	830	830	1650	1550	125	123	M	733	204	29	8
	215/75R17.5	16	12.3	15	6.00	700	700	1700	1600	126	124	L	767	211	30	8
	225/75R17.5	16	13.0	16	6.75	725	725	1850	1750	129	127	L	783	226	31	9
	235/75R17.5	18	13.0	16	6.75	875	875	2725	2575	143	141	J	797	233	31	9
	245/70R17.5	14	13.0	16	7.50	760	760	1900	1800	130	128	M	789	248	31	10
	225/70R19.5	14	13.0	16	6.75	760	760	1800	1700	128	126	M	811	226	32	9
	245/70R19.5	16	13.0	16	7.50	825	825	2240	2120	136	134	L	839	248	33	10
	265/70R19.5	18	13.0	16	7.50	850	850	2725	2575	143	141	L	867	262	34	10
	285/70R19.5	18	15.0	19	8.25	900	900	3000	2800	146	144	J	895	283	35	11
305/70R19.5	18	14.0	18	9.00	850	850	3075	2900	147	145	L	923	305	36	12	



# DSRD01



## CHARACTERISTICS



Low noise, more comfortable  
Optimized pattern design makes the noise reduced by 2dB and the driving is more comfortable.



Longer service life  
The bump design in the groove bottom can effectively reduce the problem of puncture and tear.



Anti-slip, much safer  
The optimized design of tread groove and steel sheet can effectively improve the anti-sideslip performance.

POSITION  
Drive



Pattern	Size	PR	Tread Depth		Standard Rim	Pressure(kPa)		Max. Load(kg)		Load Index		Speed Grade	Inflated Diameter			
			mm	1/32in		Single	Dual	Single	Dual	Single	Dual		mm		inch	
													Overall Diameter	Section Width	Overall Diameter	Section Width
DSRD01	205/75R17.5	14	13.0	16	6.00	760	760	1550	1450	123	121	M	733	204	29	8
	205/75R17.5	16	13.0	16	6.00	830	830	1650	1550	125	123	M	733	204	29	8
	215/75R17.5	16	15.1	19	6.00	700	700	1700	1600	126	124	L	767	211	30	8
	225/70R19.5	14	15.5	20	6.75	760	760	1800	1700	128	126	M	811	226	32	9
	225/75R17.5	16	13.0	16	6.75	725	725	1850	1750	129	127	L	783	226	31	9
	235/75R17.5	18	13.0	16	6.75	875	875	2725	2575	143	141	J	797	233	31	9
	245/70R17.5	14	15.0	19	7.50	760	760	1900	1800	130	128	M	789	248	31	10
	245/70R19.5	16	15.5	20	7.50	825	825	2240	2120	136	134	L	839	248	33	10
	265/70R19.5	18	14.0	18	7.50	850	850	2725	2575	143	141	L	867	262	34	10
	285/70R19.5	18	15.0	19	8.25	900	900	3000	2800	146	144	J	895	283	35	11
305/70R19.5	18	16.0	20	9.00	850	850	3075	2900	147	145	L	923	305	36	12	



# DUA100



## CHARACTERISTICS



Longer service life  
Unique tread design and compound provide longer mileage and reduce uneven wear.



Excellent handling and steering performance  
Four longitudinal grooves design, provides excellent handling and steering performance and good drainage performance.



Driving stability  
Optimised belt structure designing, help the ground area of tire be more even and improve driving stability.

POSITION  
All Position



Pattern	Size	PR	Tread Depth		Standard Rim	Pressure(kPa)		Max. Load(kg)		Load Index		Speed Grade	Inflated Diameter			
			mm	1/32in		Single	Dual	Single	Dual	Single	Dual		mm		inch	
													Overall Diameter	Section Width	Overall Diameter	Section Width
DUA100	7.00R16LT	12	13.5	17	5.50F	670	670	1320	1180	115	110	L	775	200	31	8
	7.50R16LT	14	13.5	17	6.00G	770	770	1500	1320	122	118	L	805	215	32	8
	8.25R16LT	16	13.5	17	6.50H	770	770	1800	1600	128	124	L	855	235	34	9



# DFA100



## CHARACTERISTICS



Stronger loading capability  
Strengthened bead design provides better loading capability.



Anti-puncture for safe driving  
Big block pattern design provides excellent puncture resistance and cutting resistance ability.



Self-cleaning design for longer service life  
The design of "pop-up" stones protects the bottom of the ditch and resists sand and gravel.

POSITION  
All position



Pattern	Size	PR	Tread Depth		Standard Rim	Pressure(kPa)		Max. Load(kg)		Load Index		Speed Grade	Inflated Diameter			
			mm	1/32in		Single	Dual	Single	Dual	Single	Dual		mm		inch	
													Overall Diameter	Section Width	Overall Diameter	Section Width
DFA100	12.00R24	20	31.0	39	8.50	900	900	4500	4125	160	157	F	1226	315	48	12
	12.00R24	24	31.0	39	8.50	930	930	5000	4750	164	162	F	1226	315	48	12

OFF ROAD